

Campside

By Alicia Plummer



Finished Measurements:

Needles

US 7/ 4.5 mm 32” circular needles

Notions:

4 place markers, Darning needle for weaving ends

Yardage Information

3 Skeins Julie Asselin’s Leizu DK –
713.2 meters (780.0 yards), 345 grams per skein

Gauge:

20 sts & 28 rows = 4”/10 cm in
stockinette on US size 7/4.5 mm blocked

Abbreviations:

co-cast on

k – knit

k2tog- knit 2 together

m1l- make 1 left

m1r- make 1 right

p – purl

pm - place marker

Rep - repeat

sm - slip marker

ssk- slip, slip, knit

st/s – stitch/es

yo- yarnover

Key

RS: knit
WS: purlRS: yo
WS: yoRS: k2tog
WS: p2tog

repeat

RS: grey no stitch
WS: grey no stitchRS: M1 (right leaning)
WS: M1 purlwise (right leaning)RS: M1 (left leaning)
WS: M1 purlwise (left leaning)RS: ssk
WS: p2tog tbl**Shawl:**

With US size 7 needles, Co 2 sts using backwards loop method. Work 10 rows of garter stitch.

K2, rotate work 90 degrees, pick up and knit 5 sts along edge, rotate work 90 degrees, pick up and knit 2 sts at cast on edge: 9 sts total.

Setup Row:

K2, pm, p2, pm, p1tbl, pm, p2, pm, k2.

Increase Rows:

Row 1: K2, sm, m1r, k to m, m1r, sm, k1tbl, sm, m1l, k to m, m1l, sm, k2.

Row 2: WS row: k2, p to last m, sm, k2.

Repeat rows 1 & 2 until you have 24 sts per panel, 53 sts total, ending on a WS row.

Begin Eyelet Lace:

Work eyelet chart 1 on the right panel and eyelet chart 2 on the left panel until you have 60 sts per panel, 125 sts total, ending on a WS row.

Switch to working eyelet chart 3 on right hand side of shawl and eyelet chart 4 on the left hand side until you have 96 sts per panel, 197 sts total, ending on a WS row.

Switch to working eyelet chart 5 on the right hand side of shawl and eyelet chart 6 on the left hand side until you have 138 sts per panel, 281 sts total, ending on a WS row.

Switch to working eyelet chart 7 on the right hand side of the shawl and eyelet chart 8 on the left hand side of the shawl until you have

162 sts per panel, 329 sts total, ending on a WS row.

Ribbing:

k2, sm, m1r, *k2, p2* to marker, m1r, sm, k1tbl, sm, m1l, *k2, p2* to marker, m1l, sm, k2.

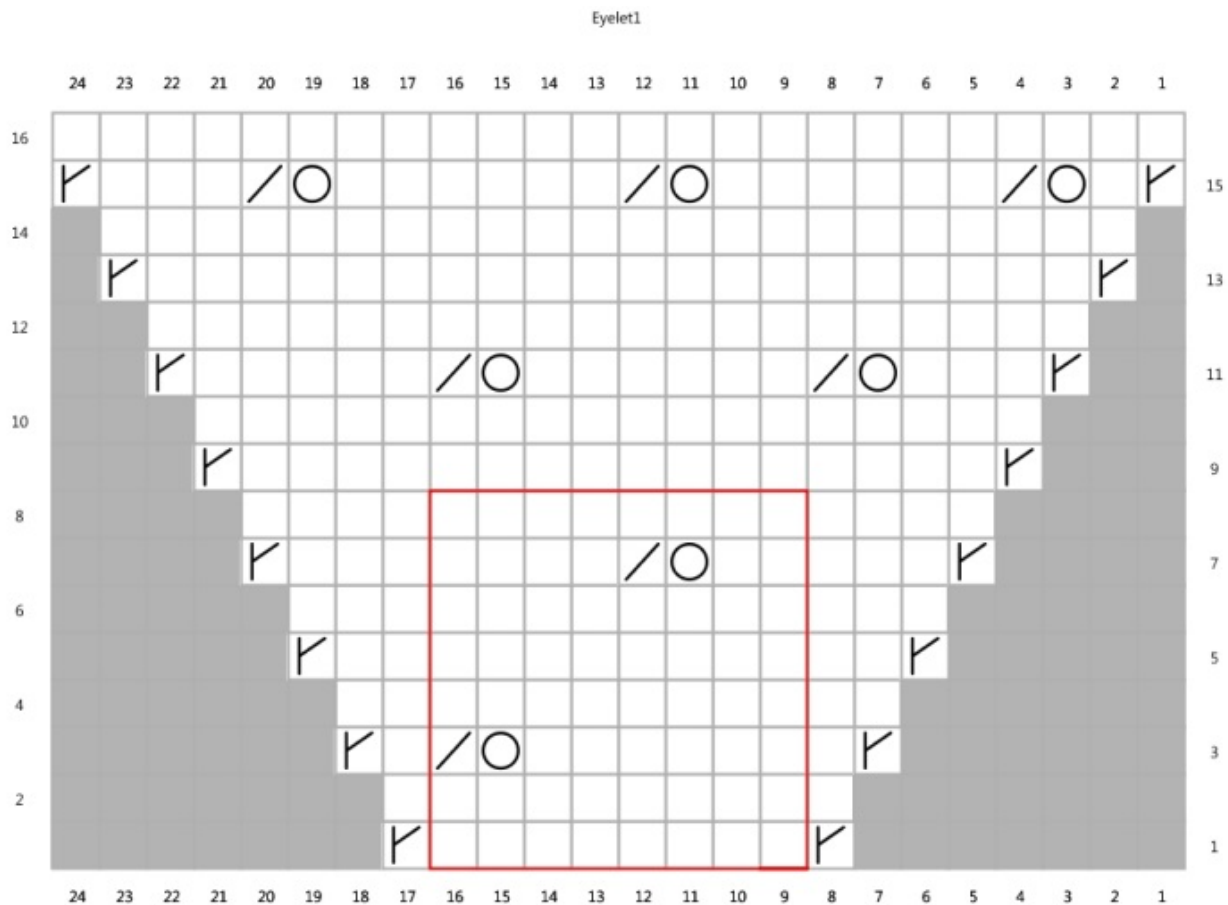
on reverse side work sts as they appear

On the next increase row: k2, sm, m1r, k1 *k2, p2* to marker, m1r, sm, k1tbl,

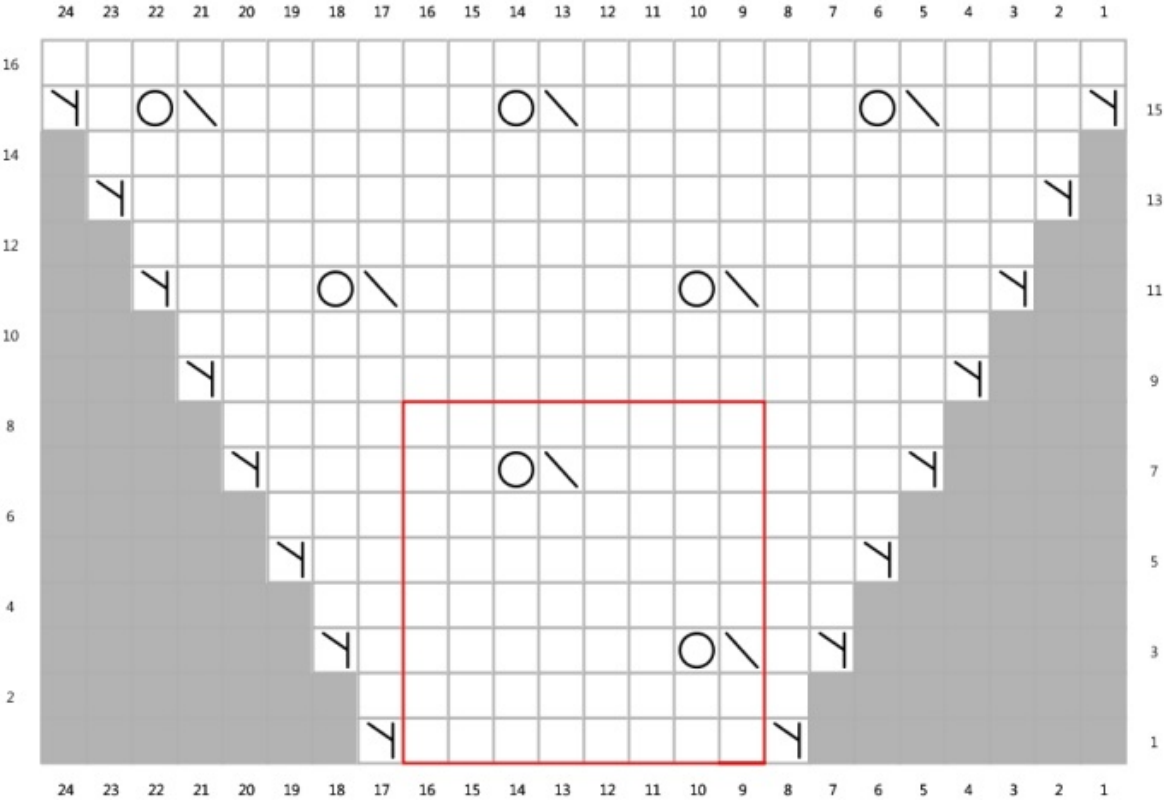
sm, m1l, k1, *k2,p2* to 1 st before marker, k1, m1l, sm, k2

Basically, your knit portions at the point of the shawl and each corner will make a larger stockinette piece as you continue the rib but you should have a wide band of k2,p2 rib between that.

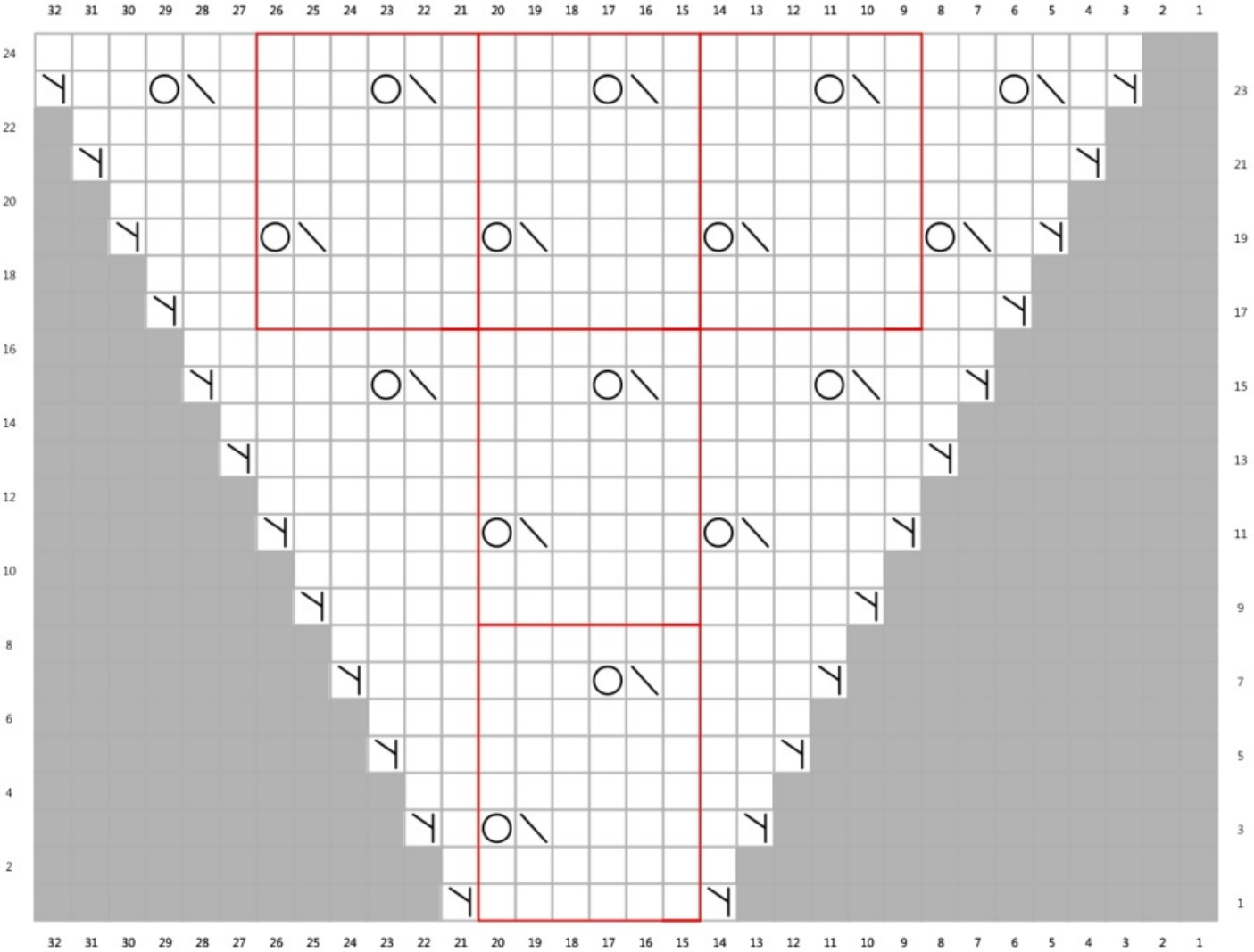
Work that for about 1.5" and bind off! :)



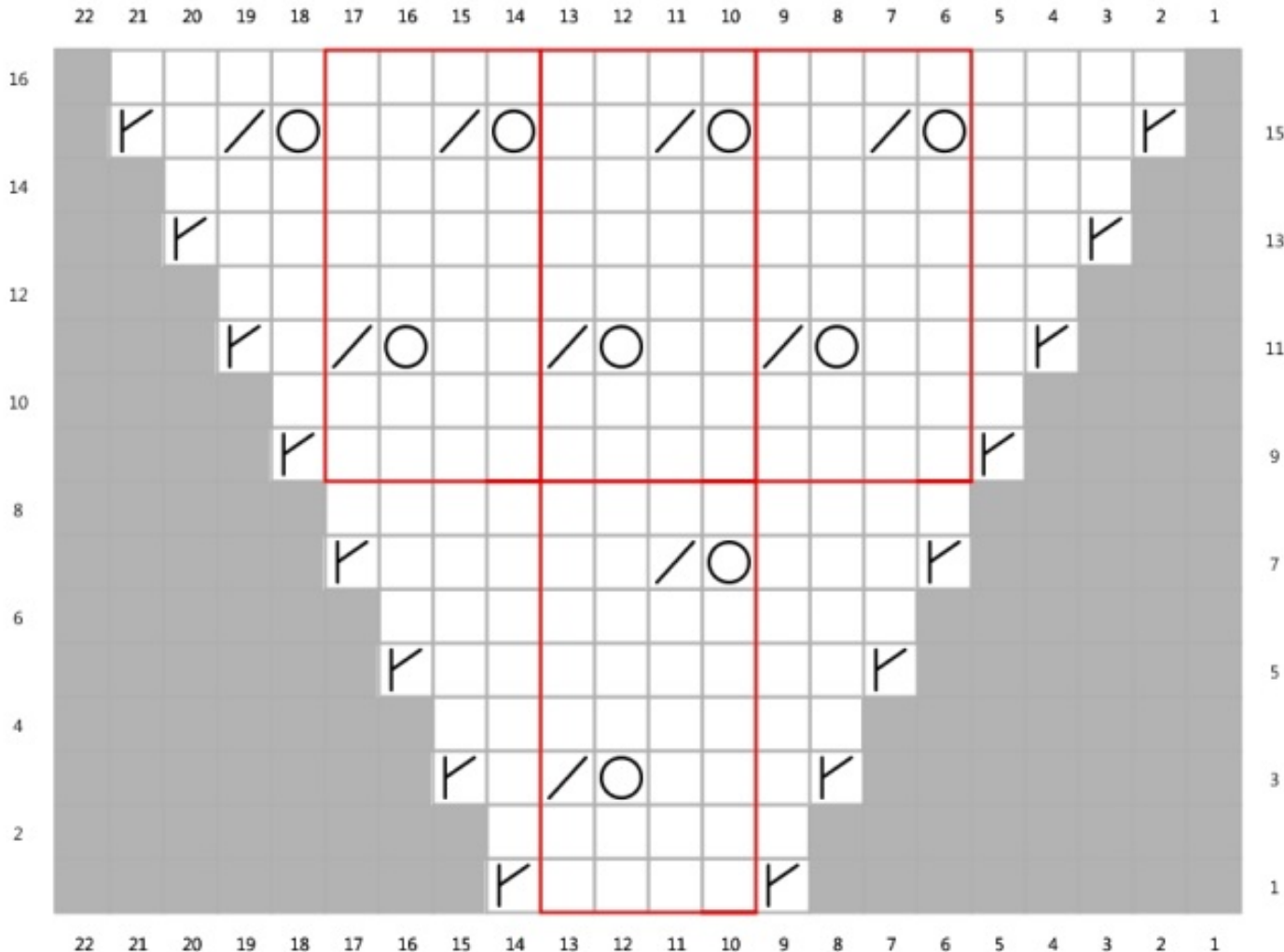
Eyelet2

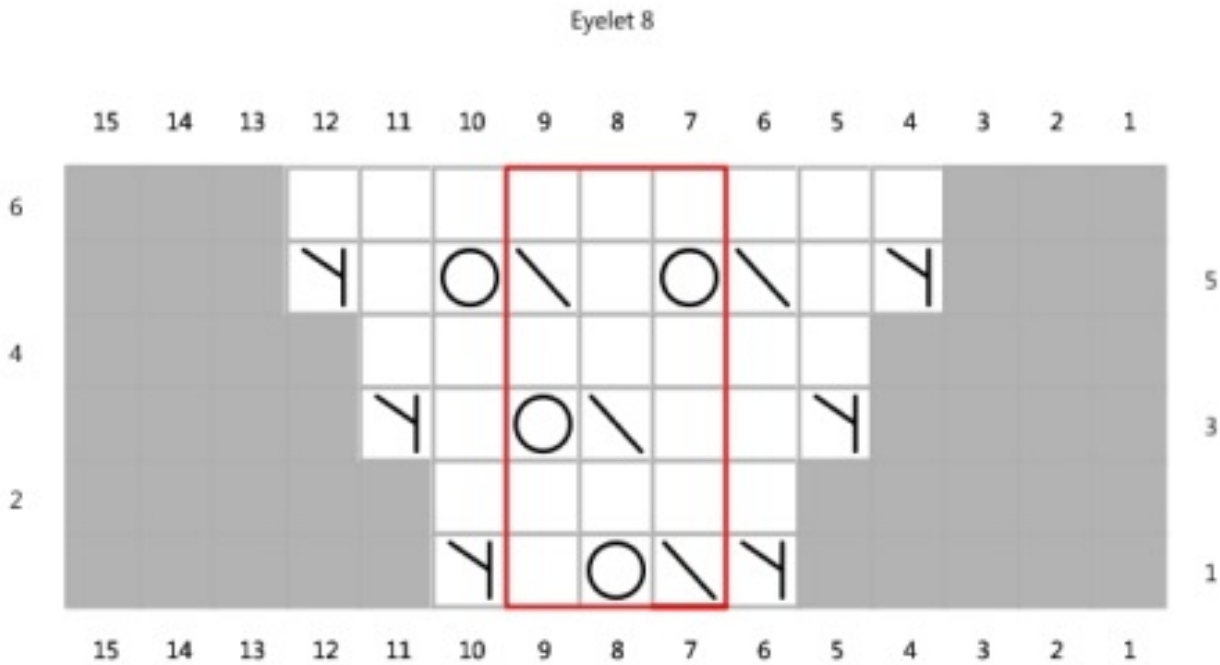


Eyelet 4



Eyelet 5





This

pattern is intended for personal use only. The entire contents of this pattern are subject to copyright. You may not sell, distribute, or produce and sell items made from this pattern without direct written consent from Alicia Plummer.

CONTACT INFORMATION:

A lot of time and effort has been put into this pattern to make it as readable, clear, and error-free as possible. If you have any questions, please contact me.

Ravelry Username: [AliciaPlum](#)

Email: AliciaKPlummer@yahoo.com

You are invited to join and post in our Ravelry group, Plum Dandi!

www.ravelry.com/groups/plum-dandi

ACKNOWLEDGEMENTS:

Thank you to Meghan at Pom-Pom-this pattern is dedicated to you and your sweet personality. I am so blessed that we've met.



